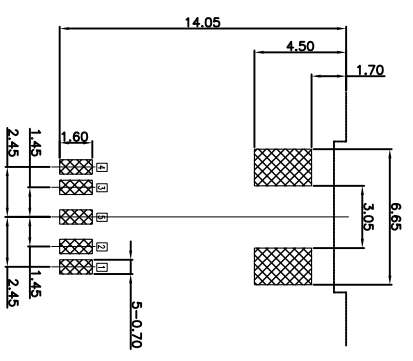
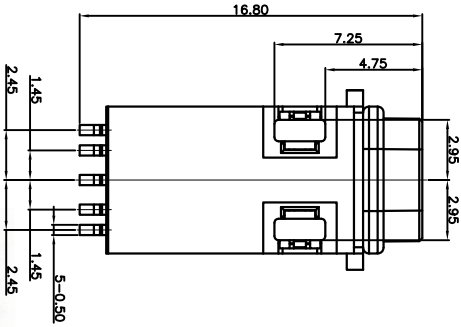
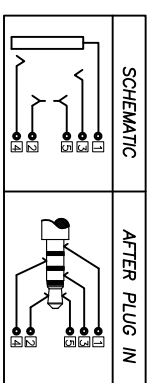
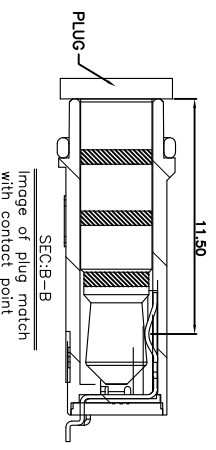
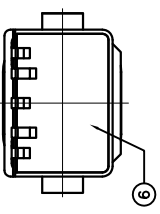
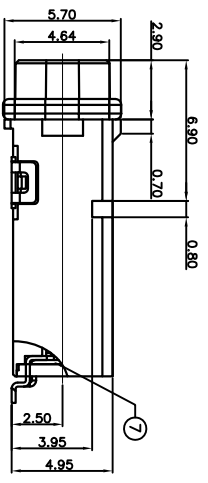
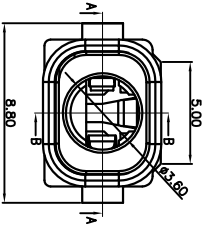


- SPECIFICATIONS:
- INSULATION RESISTANCE: VOLTAGE OF 500V D.C. SHALL BE APPLIED TO THE TERMINALS. AFTER WHICH MEASUREMENT SHALL BE MADE A GAUGE FOR THE MEASUREMENT SHALL BE USED THE INSULATION GAUGE.
 - CONTACT RESISTANCE: 30mΩ OR LESS
 - VOLTAGE PROOF: 500V AC FOR ONE MINUTE
 - DURABILITY: 5,000 INSERTION/REMOVAL CYCLES (MINIMUM)
 - INSERTION FORCE: 0.6KGF~2.0KGF
 - WITHDRAWAL FORCE: 0.6KGF~2.0KGF
 - WATER PROOFNESS: This product is based on IPX5/7 of the JIS Standard
 - USING PLUG: 43.5MM, 4-POLE STEREO EARPHONE (LCH/RCH/GND/MIC) PROVIDED THAT THEY CONFORM TO JIS C6560
 - HOUSING STRENGTH IS 50N MAX



SECA-A
Image of plug match with contact point

Recommended PCB Layout

For and on behalf of
XKB INDUSTRIAL PRECISION CO., LIMITED
香港星坤工業精密有限公司

ANGULAR	±5°
L ≤ 4	±0.2
4 < L ≤ 16	±0.3
16 < L ≤ 63	±0.4
L > 63	±0.5

DSND	DATE	SCALE: N/A	MODEL TYPE:
DWN	DATE	VIEW: ②	3.5 PHONE JACK
CHKD	DATE	UNIT: mm	PJ-3255
APPD	DATE	SIZE: A4	PJ-3255

10	Oval ring		
9	BOND		
8	TERMINAL		Au PLATED
7	COVER	HIGH TEMP	UL 94V-0
6	HOUSING	HIGH TEMP	UL 94V-0
5	TERMINAL 5	COPPER ALLOY	Au PLATED
4	TERMINAL 4	COPPER ALLOY	Au PLATED
3	TERMINAL 3	COPPER ALLOY	Au PLATED
2	TERMINAL 2	COPPER ALLOY	Au PLATED
1	TERMINAL 1	COPPER ALLOY	Au PLATED