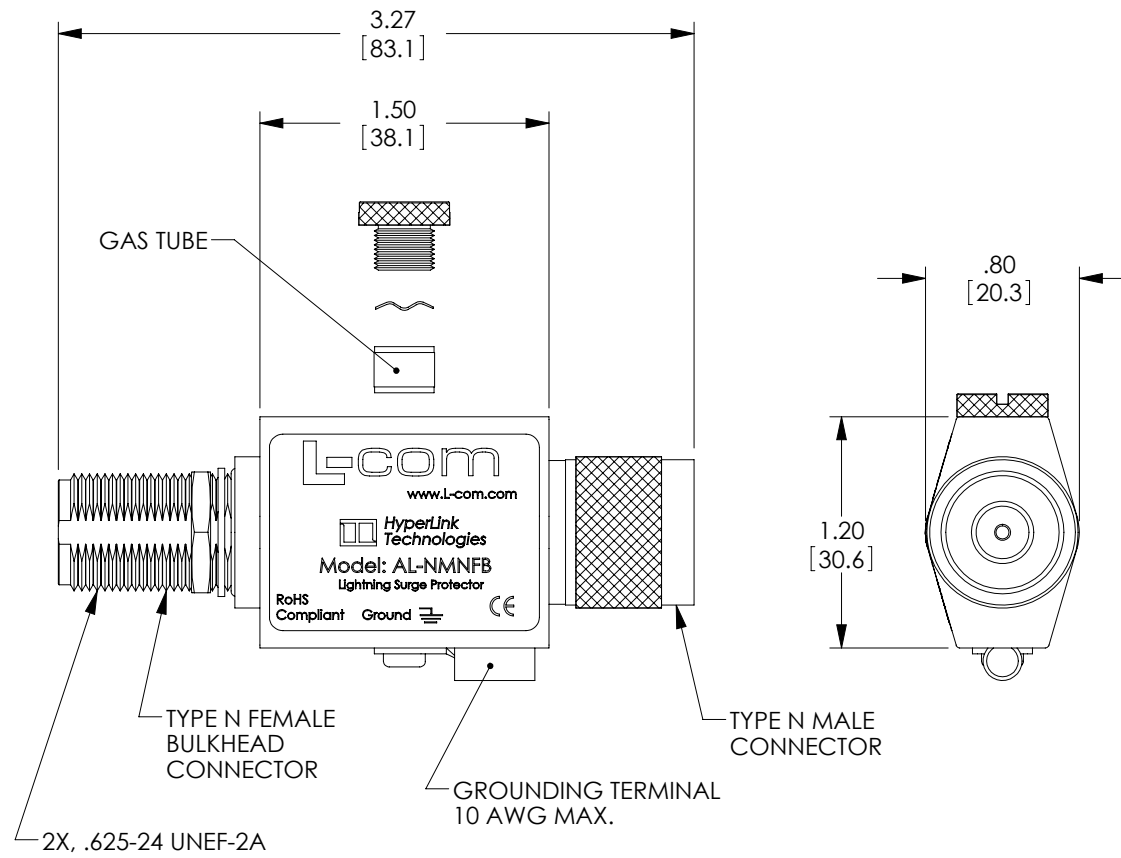
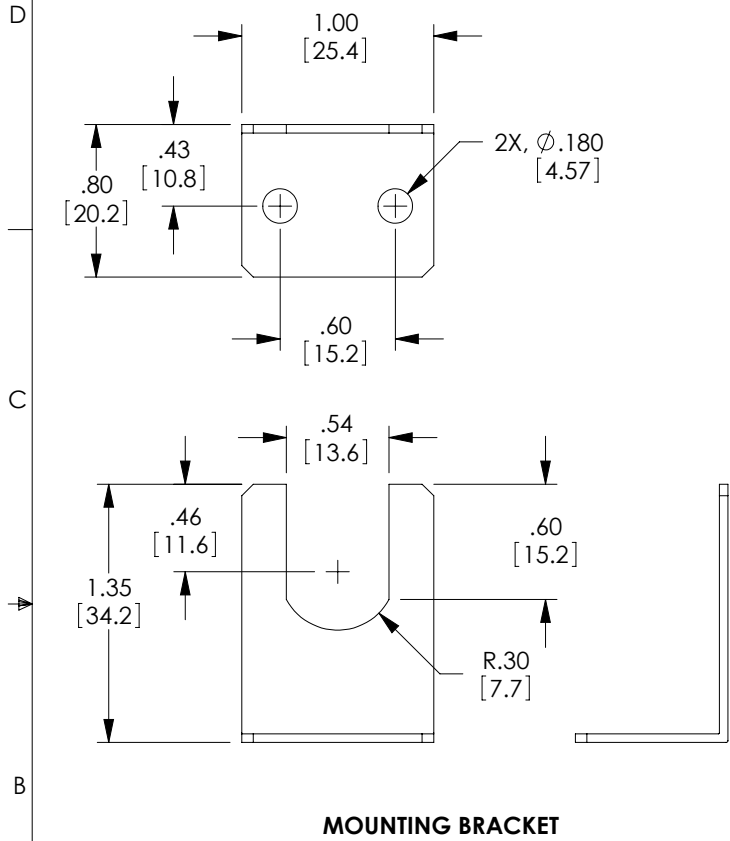


THE INFORMATION CONTAINED IN THIS DRAWING IS THE SOLE PROPERTY OF L-COM, INC. ANY REPRODUCTION IN PART OR WHOLE WITHOUT THE WRITTEN PERMISSION OF L-COM, INC. IS PROHIBITED.

REVISIONS			
REV	DESCRIPTION	DATE	APPROVED
A	INITIAL RELEASE	9/9/03	P.PESA
B	ECN 5050: UPDATED FORMAT, ADDED MNT BRKT, ADDED NOTES	9/28/10	DFP
C	ECN 5147: CREATE MODEL, NEW DRAWING FORMAT	11/16/10	D.FRISIELLO



NOTES:

1. MOUNTING BRACKET MATERIAL: .05 [1.27] THK ALUMINUM.
2. PROTECTOR MATERIAL:
 BODY: ALUMINUM
 CONTACT: GOLD PLATED BRASS
 INSULATOR: PTFE
3. COMPONENTS SHALL BE PACKAGED IN ACCORDANCE WITH L-COM SPECIFICATIONS.

RoHS Compliant ✓

UNLESS OTHERWISE SPECIFIED, DIMENSIONS ARE IN INCHES [mm] OVERALL CABLE LENGTH TOLERANCE: ≤12 [305] = +1 [25] / -0 >12 [305] ≤60 [1524] = +2 [51] / -0 >60 [1524] ≤120 [3048] = +4 [102] / -0 >120 [3048] ≤300 [7620] = +6 [152] / -0 >300 [7620] = +3% / -0% ALL OTHER DIMENSIONAL TOLERANCES: .X = ±.2 .XX = ±.02 .XXX = ±.005	APPROVALS DRAWN BY D.FRISIELLO CHECKED BY D.CASTRO APPROVED BY K.BURGNER	DATE 11/16/10 11/16/10 11/16/10	45 BEECHWOOD DRIVE NORTH ANDOVER, MA 01845
	CONFIGURATION DETAILS OF UNDIMENSIONED FEATURES MAY VARY COLOR VARIATIONS MAY OCCUR		
PROJECTION 	SIZE A	FSCM NO. 43321	DWG. NO. AL-NMNFB
SCALE: NONE		CAD FILE: AL-NMNFB.SLDRW	REV. C SHEET 1 OF 1