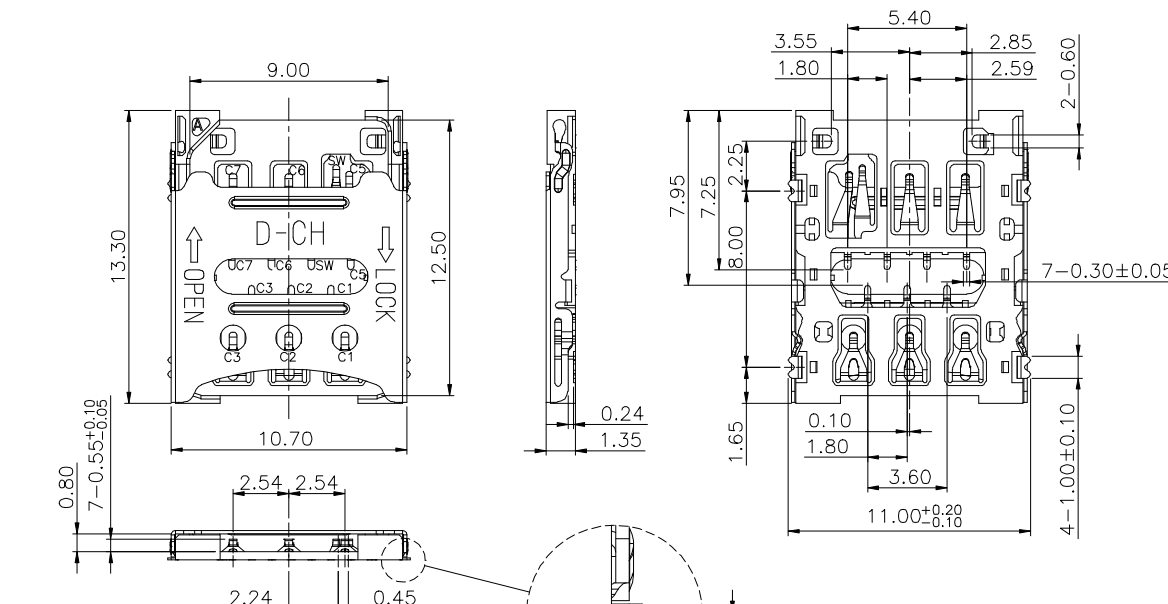
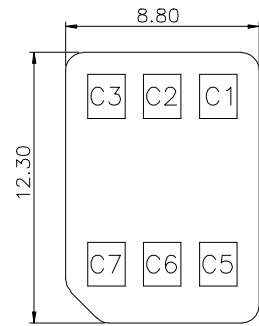
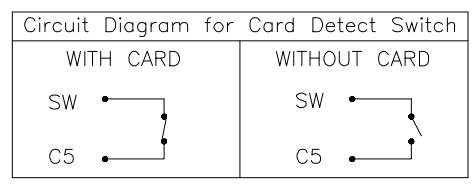
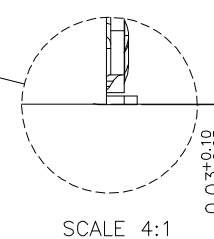
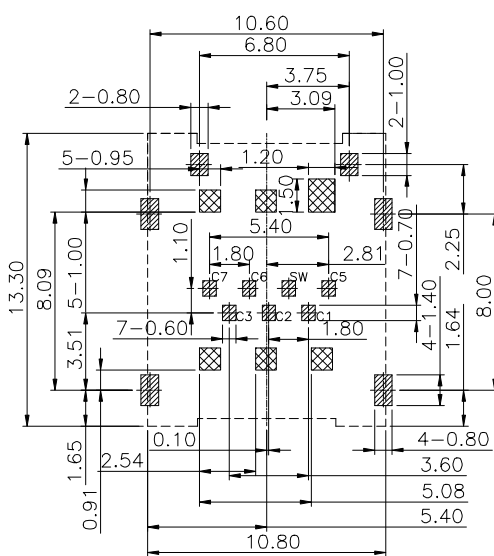


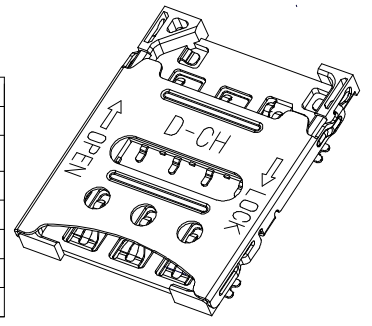
REV	ECN NUMBER	DESCRIPTION	DRAW	DATE
A0	NEW	PERLIMINARY	Andy	2021.03.27
A1		修改写和下载孔结构	LIU	2021.06.29



- NOTES:
- MATERIAL:
 - Housing: High Temperature Thermoplastic; UL94V-0; Color Black.
 - Terminal: Copper Alloy, T=0.10mm.
 - Shell: Stainless Steel, T=0.15mm.
 - FINISH:
 - Terminal: Plated Gold on the Contact Area and Solder Tails
 - Peg: Plated Gold on the Solder Tails
 - SPECIALITY:
 - Rated current: 1.0A
 - Rated voltage: 50V
 - Contact Resistance: 50mΩ MAX
 - Insulation Resistance: 100MΩMIN 100V DC
 - Dielectric withstanding voltage: 100V AC.
 - Durability Cycles: 2000 Cycles.
 - Solder ability: 245±5°C, 5±0.5s.
 - Operating condition: Temperature: -40°C~+85°C



PIN NO	PIN NAME
C1	VCC
C2	RST
C3	CLK
C5	GND
C6	VPP
C7	I/O
SW	Switch Pin



MEASURE POINT: QUADRANT POINT (QP) TANGENCY POINT (TP) INTERSECTION POINT (IP)	DongGuan D-CHAIN Precision Components CO, Ltd D-CHAIN	DESIGN: Andy	DATE: 2021.03.27	TITLE: 1.35 NANO SIM CARD WITH SWITCH PIN HINGE TYPE
UNLESS OTHERWISE SPECIFIED, TOLERANCE: X: ±0.25 X.x: ±0.20 X.xx: ±0.15 ANGULAR: ±3'		CHECKED:	DATE:	APPROVED:
PART NO.: SA0601254135-158		REV: A1	SCALE: 1:1	UNIT: mm
DRAWING NO.:		SIZE: A4	SHEET: 1/1	