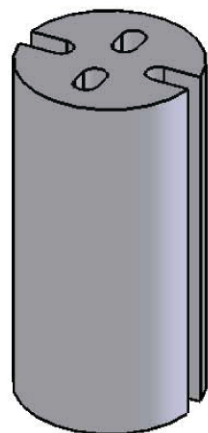
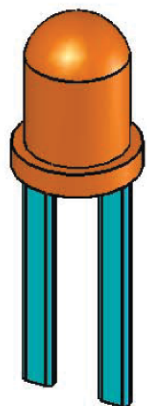
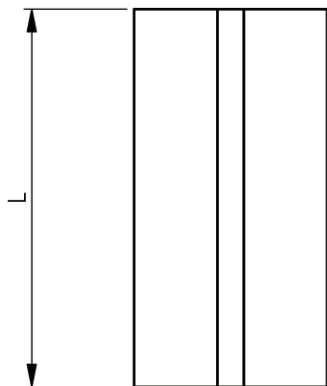
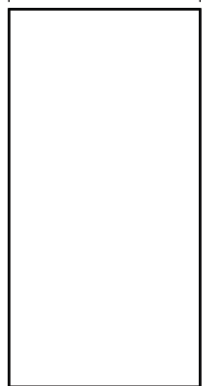
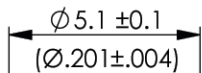
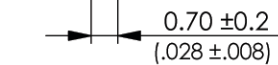
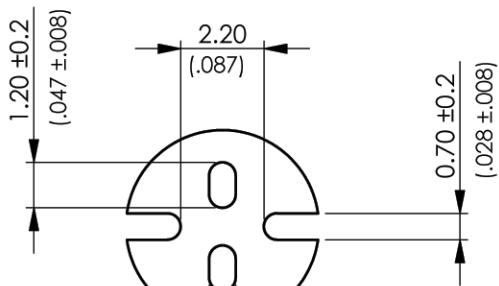
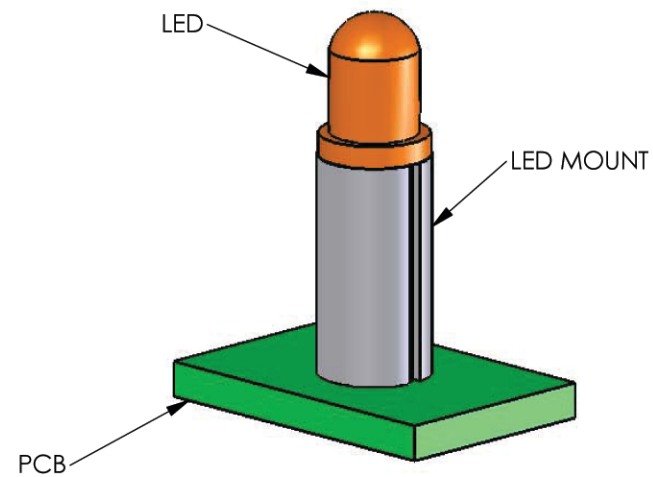


AVAILABLE BY SPECIAL ORDER- NAFTA REGION ONLY



REV.	MODIFICATION.	DATE	DRN
01	NEW DWG	25/05/01	JPM
02	SCN04-093	23/09/04	OW
03	SCN04-096	01/10/04	OW
04	SCN04-100	14/10/04	OW
05	ECN05-021	26/01/05	OW
06	ECR05-096	31/08/05	OW



TYPICAL APPLICATION VIEW

INFORMATION CONTAINED IN THIS DOCUMENT IS CONFIDENTIAL TO RICHCO INTERNATIONAL Co. Ltd. AND MAY NOT BE DISCLOSED OR REPRODUCED IN WHOLE OR PART WITHOUT THEIR WRITTEN CONSENT

**Richco**

METRIC GENERAL TOLERANCES ±0.25 ARE PRIMARY UNLESS OTHERWISE STATED  
 1 DECIMAL PLACE ±  
 2 DECIMAL PLACES ±  
 ANGULAR ±1°

IMPERIAL GENERAL TOLERANCES ±0.010 ARE FOR REFERENCE UNLESS OTHERWISE STATED  
 1 DECIMAL PLACE ±  
 2 DECIMAL PLACES ±  
 ANGULAR ±1°

- NOTES:  
 1) FOR USE WITH 5mm , T-1 3/4 LEDS.  
 2) ALL PRIMARY DIMENSIONS IN mm,  
 SECONDARY DIMENSIONS IN INCHES.

MATERIAL: PVC UL94 V-0 (RMS-176)		COLOUR: BLACK	
TITLE: LED MOUNTS		PART No: LEDM-1-XX	
DRG No: 786-9022	NPR REF: N/A	SIZE A4	
DRN OW	DATE 14/10/04		
SCALE NTS		SHEET No 1 OF 1	

PART No.	LENGTH
LEDM-1-02 - LEDM-1-30	2.0mm - 30mm