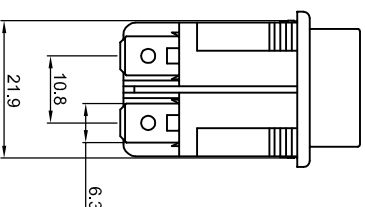
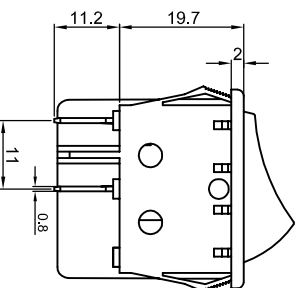
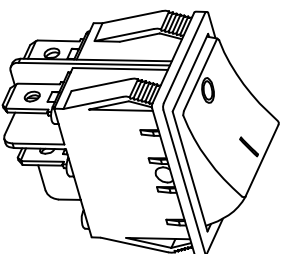
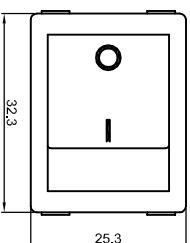


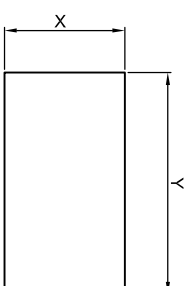


R



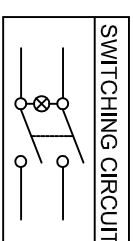
Rating: 16A 125V AC (UL CUL )  
 16A 250V AC (UL CUL VDE ENEC CB CQC)  
 Contact Resistance: 50m Ω (Max)  
 Insulation Resistance: DC 500V 100M Ω (Min)  
 Dielectric Strength: AC1500V 1 minute  
 Electrical life: 10,000 cycles  
 Operating Temperature: 0℃~85℃  
 Safety Approval:

Function:ON-OFF



CUT-OUT

	X	Y
	0.75~1.25	30.0+0.122.0+0.1
	1.25~2.00	30.2+0.122.0+0.1
	2.00~3.00	30.4+0.122.0+0.1



Marking	柄		ON OFF	DIMENSION UNIT	单位
	X	0			
	1	1		mm.	
	2	3			
	3	4			
	4	5			
	5	7			
	6	8			
	7	9			
	8	B			

MATERIAL:

Body:Nylon66, UL rated:94V-2 min

Actuator:Nylon66, UL rated:94V-2 min

Terminal:Brass,silver or tin plated

公差 TOLERANCES		版本 VERSION		比例尺 SCALE		角度 ANGLE ±1°		品名 TITLE		图号 DRAWING NO	
.X±0.3		A0		NONE		DATE		R-210-C5L-BG		R-210-C5L-BG-A0	
版本 VER.	New Issue	日期 DATE	2009.02.26	核准 APPROVED BY	Xinchaq_Lee	核对 CHECKED BY	Gokey_Guo	绘图 DRAWN BY	Gokey_Guo	ECN NO.	N/A
	变更说明 CHANGE DESCRIPTION										