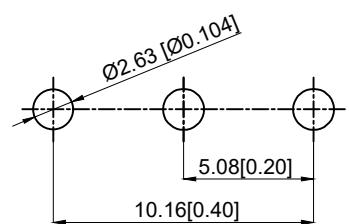


Product specifications

产品规格

1. Rated current: 1A, 250V AC or 28 VDC
1. 额定电流: 1A, 250V AC or 28 VDC
2. Contact Resistance: 20 mΩ max
2. 接触电阻: 最大 20 mΩ
3. Insulation Resistance: 1000 MΩ min
3. 绝缘电阻: 最小 1000 MΩ
4. Dielectric Strength: 1000 VAC/1 min
4. 介电强度: 1000 VAC/1 分钟
5. Operating Temperature: -30°C to ±85°C
5. 工作温度: -30°C 至 ±85°C
6. Electrical Life: 10000 cycles
6. 电气寿命: 10000 次循环
7. Operating force: 10N max
7. 操作力: 10N max



PCB LAYOUT BOTTOM VIEW

Circuit view		SWITCHING POSITION	
MODEL NO	SPACING		
TP606	5.08	ON	ON
TermComm		2-3	2-1

6	Sealing gasket 密封垫片	POM	1	white 白色
5	Reed 簧片	Copper alloy 铜合金	1	Ag plating 镀银
4	Terminal 端子	Copper alloy 铜合金	3	Ag plating 镀银
3	Handle 手柄	PA66	1	black 黑色
2	Upper lid 上盖	PA66	1	black 黑色
1	Base 基座	PBT	1	white 白色
NO 序号	Part name 部件名	Material 材料	QTY 数量	Remark 备注

A4				
A3				
A2				
A1				
REV	DATE	REVISION	DESCRIPTION	ISSUE
	A			B



COMMON TOLERANCE	
X.XX	± 0.10
X.X	± 0.15
X	± 0.25
ANGULAR	—

UNIT	MM	PROJECTED		PRODUCT NAME:
DRAWN BY	FUYUAN	CHECKED BY	COCO	MODEL NO: TP606110228
DATE	2019	APPROVAL B	ALEN	Https: www.rocpcu.tw
ROCPCU TECHNOLOGY CO., LTD				
Copies are issued in strict confidence and shall not be reproduced or copied, or used as the basic of manufacture or sale of apparatus without permission				
D	E	F	G	